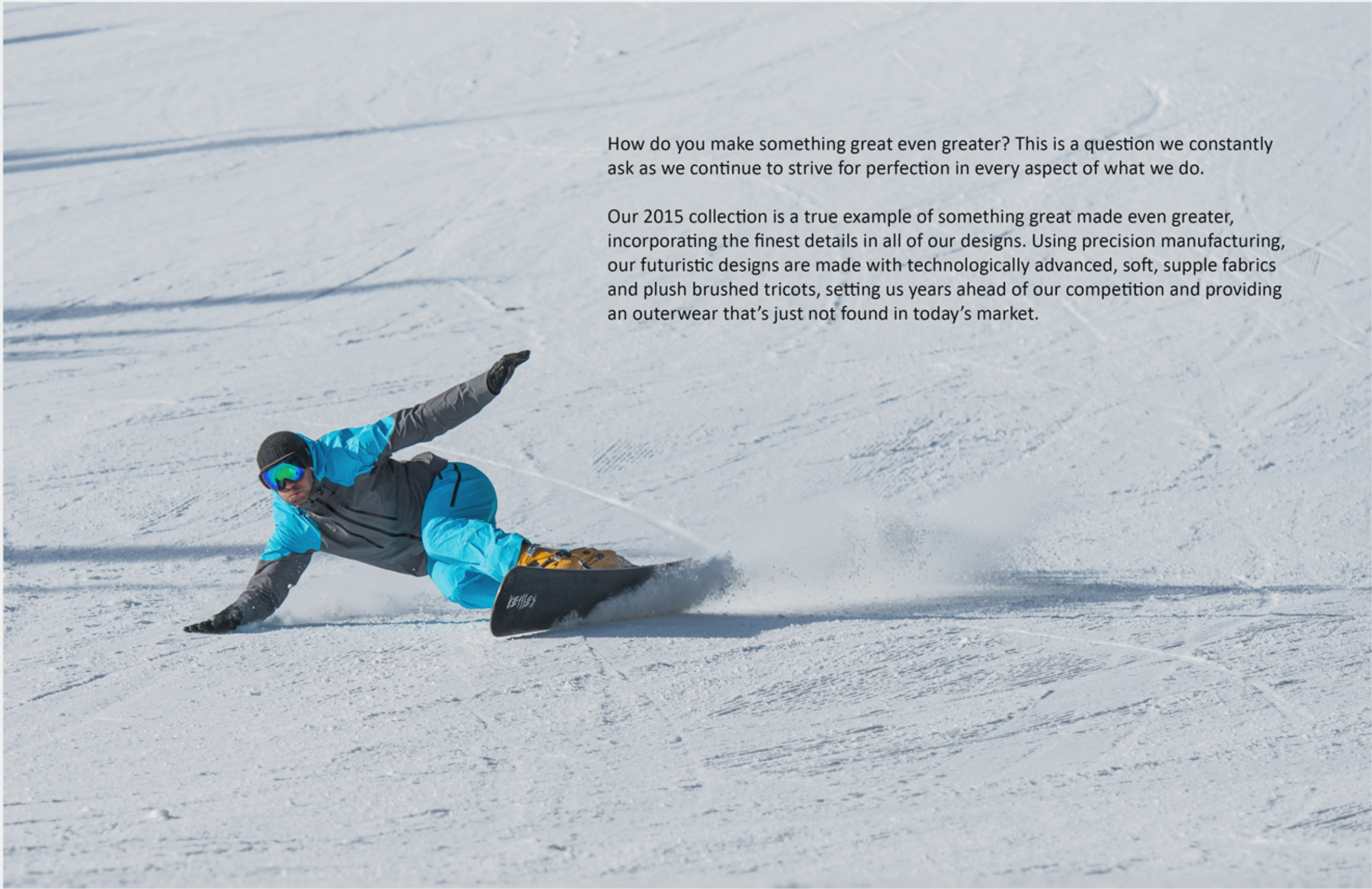




FREDERICK ANSARA DESIGN

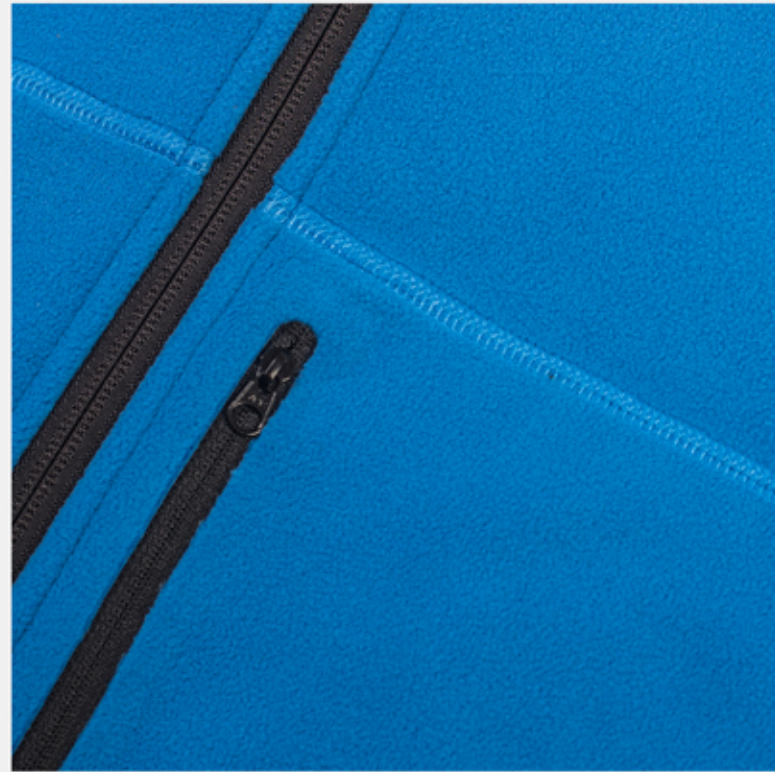


How do you make something great even greater? This is a question we constantly ask as we continue to strive for perfection in every aspect of what we do.

Our 2015 collection is a true example of something great made even greater, incorporating the finest details in all of our designs. Using precision manufacturing, our futuristic designs are made with technologically advanced, soft, supple fabrics and plush brushed tricots, setting us years ahead of our competition and providing an outerwear that's just not found in today's market.

TECHNICAL FEATURES

FLEECE



- Die cut welded chest pocket
- Flat-lock seam construction



- 4 way stretch side panels

SOFTSHELL



- Waffle fleece backer
- Full internal welded brushed tricot collar



- Ergonomic 3 way adjustable hood



V1

2015 V1 PROFILE FLEECE FA-008

- Polartec Windblock Fleece
- 4 way stretch side panels
- Brushed tricot inside collar
- YKK® water-resistant zippers
- Die cut welded chest pocket
- Articulated elbows
- Flat-lock seam construction
- Profile fit for perfect layering
- Made in Canada
- Lifetime warranty



Emerald Green (featured color)
Sky Blue
Vader Black





V2

2015 V2 PROFILE HOODED FLEECE FA-010

- Polartec Windblock Fleece
- 4 way stretch side panels
- YKK® water-resistant zippers
- Die cut welded chest pockets
- Flat-lock seam construction
- Profile fit for perfect layering
- Articulated elbows
- Hand made in Canada
- Lifetime warranty



Sky Blue (featured color)
Emerald Green
Vader Black





FORCEFIELD

2015 FORCEFIELD HOODED SOFTSHELL FA-011

- Polartec Powershield softshell
- Waffle fleece backer
- YKK water resistant main zipper
- YKK 10" chest pockets
- Articulated elbows
- Ergonomic 3 way adjustable hood
- Articulated hood (helmet compatible)
- Welded hood brim
- Full internal brushed tricot storm flap/collar
- Welded cuffs/hem
- Made in Canada
- Lifetime warranty



Flame Red (featured color)
Grey Matter



We use eVent fabrics on all of our shell jackets and pants

GE Energy



eVent® Waterproof Fabrics

data sheet

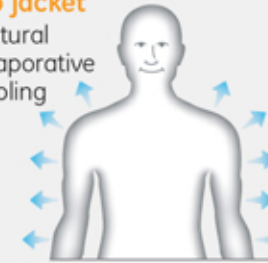


event®
waterproof fabric

Why do we sweat?

Sweating is a natural process, part of what you could call the natural air conditioning of the human body. When we exercise our muscles produce heat. The body must stay at a homeostatic or steady state of temperature, therefore it must find a way to cool itself. We balance our core temperature by sweating. Sweating essentially balances our body temperature by evaporative cooling.

No jacket
Natural evaporative cooling



How much do we sweat?

All humans sweat. A lot. Especially athletes. Humans simply walking produce 0.25 to 0.5 liters of sweat per hour, and up to 1.5 liters during strenuous activity. All this sweat has to move through your clothing system, your gloves, and your footwear.

Forerunners: PU membranes

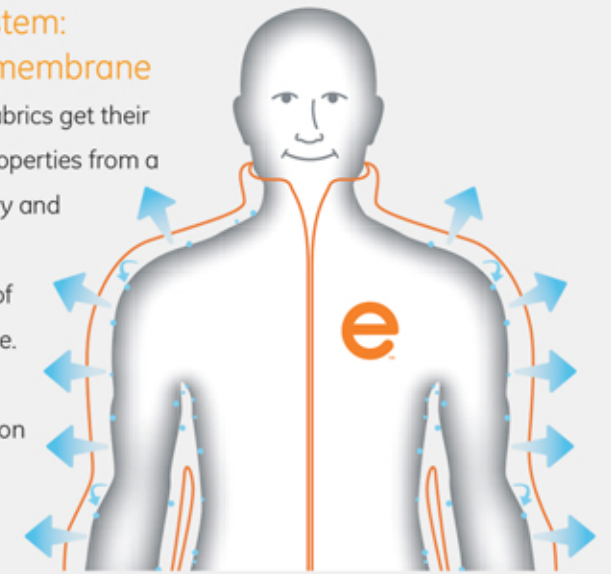
Most common waterproof/breathable membranes do not literally "breathe." Instead, they move sweat in two slow steps by a process of diffusion through a Polyurethane (PU) layer. Because PU absorbs and retains sweat, the inside of the fabric becomes wet. Then, body heat begins to push that dampness through to the outside of the fabric where it can finally evaporate—a very inefficient process.

Ineffective evaporative cooling
You soak in your own sweat



Dry system: eVent membrane

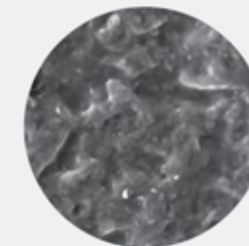
eVent® fabrics get their unique properties from a proprietary and patented waterproof membrane. Its unique composition allows millions of tiny



pores to breathe at their full potential. Sweat vents directly to the outside of the fabric in one easy step. We call this Direct Venting™ Technology. Its genius is hidden in its simplicity. eVent fabrics simply let the sweat out.

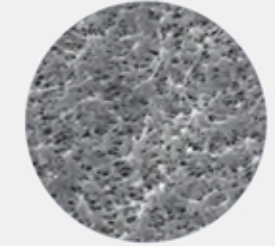
See the difference Wet system

Where are the pores to let the sweat out?



Dry system

Simple genius: These millions of pores let the sweat out.



Why switch to eVent fabrics?

Because eVent fabric lets sweat escape up to twice as fast as common waterproof/breathables.

TECHNICAL FEATURES

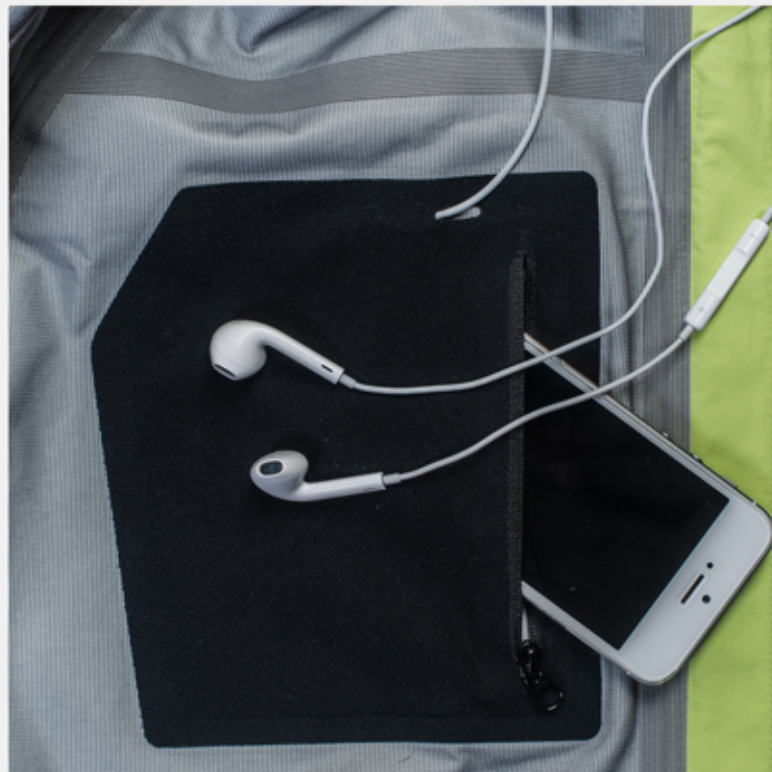
SUBSONIC/SUPERSONIC JACKET



- Fully taped seams (tiny tape 12mm)
- Micro-seam allowance (1.5mm)
- One-hand adjustable draw cord



- Wrist gaiters
- Thresher cuffs



- Welded brushed tricot media pocket



- Two welded chest pockets
- Seamless integrated front zipper garages
- True cross flow venting system



SUPERSONIC JACKET

2015 SUPERSONIC 3L JACKET

FA-012

- eVent 40d 3L shell fabric 20,000mm 20,000g
- YKK waterproof zippers
- Laser cut to reduce bulk and weight
- Fully taped seams (tiny tape 12mm)
- Micro-seam allowance (1.5mm) to reduce bulk
- One-hand adjustable draw cord
- Laminated brim
- Articulated hood (helmet compatible)
- Ergonomic 3 way adjustable hood
- Two 9" welded chest pockets
- True cross flow venting system
- Welded brushed tricot inside media pocket
- Articulated elbows
- Removable powder skirt
- Jacket to pant interface
- Thresher cuffs
- Wrist gaiters
- Hand made in Canada
- Lifetime warranty



- Space Grey/Sonic Blue (featured color)
- Space Grey/Fire Red
- Space Grey/Lime
- Space Grey/Aqua





SUBSONIC JACKET

2015 SUBSONIC 3L JACKET

FA-013

- eVent 3L shell fabric 20,000mm 20,000g
- YKK waterproof zippers
- Laser cut to reduce bulk and weight
- Fully taped seams (tiny tape 12mm)
- Micro-seam allowance (1.5mm) reduces bulk and weight
- One-hand adjustable draw cord
- Laminated brim
- Articulated hood (helmet compatible)
- Ergonomic 3 way adjustable hood
- Two welded chest pockets
- Seamless integrated front zipper garages
- True cross flow venting system
- Welded brushed tricot inside media pocket
- Articulated elbows
- Removable powder skirt
- Jacket to pant interface
- Wrist gaiters
- Thresher cuffs
- Hand made in Canada
- Lifetime warranty



Lime (featured color)
Vader Black
Fire Red
Pool Blue
Sonic Blue



TECHNICAL FEATURES

SUBSONIC PANT



- Welded front pockets
- Cross flow side vents
- YKK waterproof zippers



- Articulated knees



- Pant to jacket interface
- Mono belt loop



- Fully taped seams (12mm)
- Micro-seam allowance (1.5mm)
- Brushed tricot inside waistband and fly



SUBSONIC PANT

2015 SUBSONIC 3L PANT

FA-014

- eVent 3L shell fabric 20,000mm 20,000g
- YKK waterproof zippers
- Laser cut to reduce bulk and weight
- Fully taped seams (tiny tape 12mm)
- Micro-seam allowance (1.5mm) reduces bulk and weight
- Welded front pockets
- Cross flow side vents
- Articulated knees
- Mono belt loop
- Brushed tricot inside waistband and fly
- Pant to jacket interface
- Snap compatible back protector loops
- Asym boot cuff
- Hand made in Canada
- Lifetime warranty



Fire Red (featured color)
Vader Black
Lime
Pool Blue
Sonic Blue



Measurements - Size Charts

Men	Small		Medium		Large		X-Large		2X-Large	
	INCH	CM	INCH	CM	INCH	CM	INCH	CM	INCH	CM
Chest	39	99	41	104	44	112	47	119	51	130
Waist	28 - 30	71 - 76	32 - 34	81 - 86	36 - 38	91 - 97	40 - 42	102 - 107	44	112
Hip	38	97	40	102	43	109	46	117	50	127
Sleeve	33	84	34	86	35	89	36	91	37	94
Inseam Regular	31	79	32	81	33	84	34	86	35	89

CHEST _ 1

Measurement should be taken around the fullest part, just under the arms and across the shoulder blades.

WAIST _ 2

Measure loosely around waist above or around belly button.

HIP _ 3

Stand, feet together, and measure around the fullest part of the seat.



INSEAM _ 4

Measure from crotch to the floor.

SLEEVE _ 5

With elbow bent, measure from center back of neck to back elbow and down to outside wrist bone.

NOTES
